



## Scald - Barley

### Occurrence:

- Cooler moister areas of the western Prairie region
- Risk of appearance increased with susceptible varieties and tight rotations

### Symptoms Occur On:

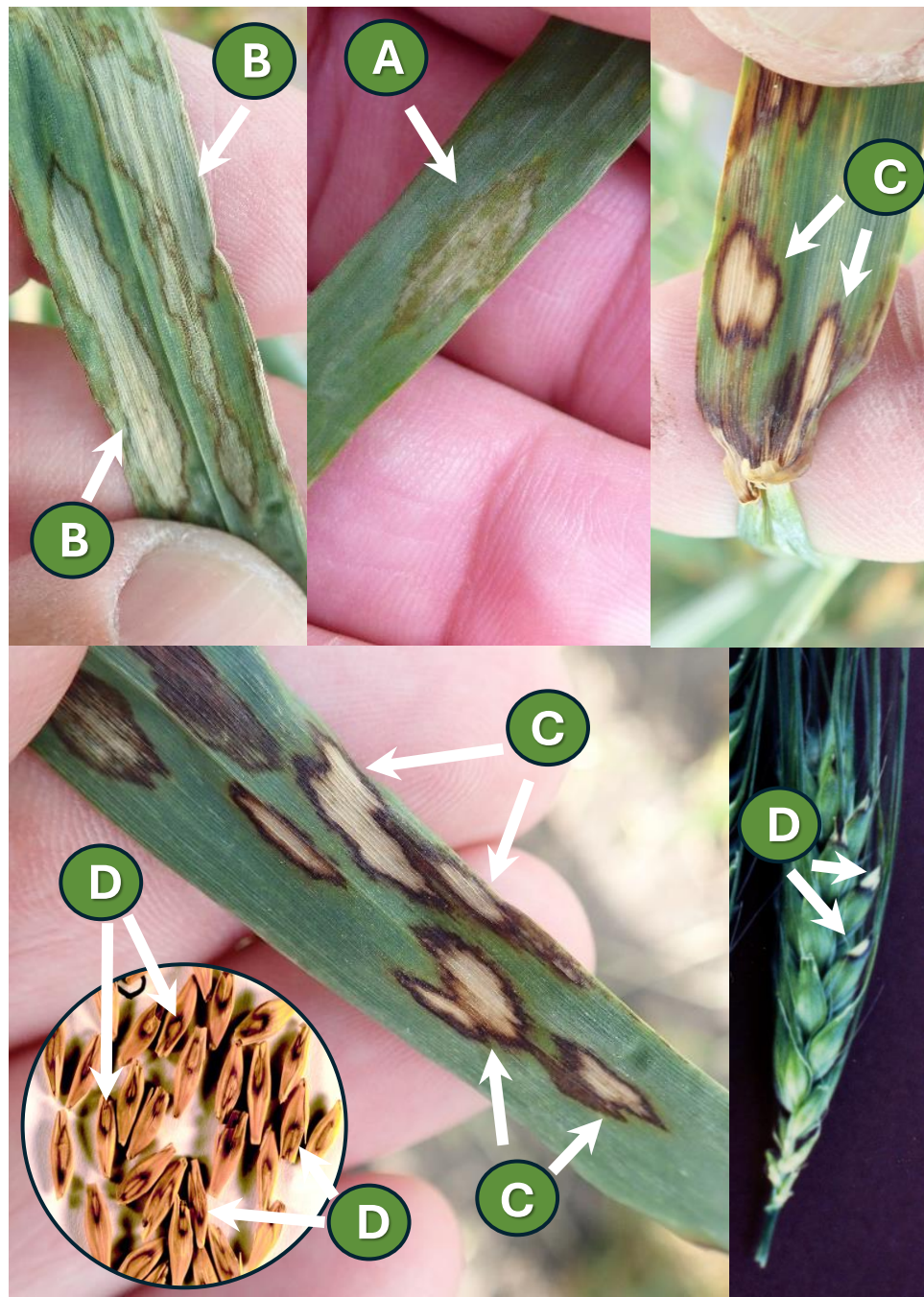
- Leaves, leaf sheaths and head tissues (A-D)
- Some herbicides can produce “scald-like” symptoms (e.g. Puma) under cooler temps.
- Herbicide damage confined to leaf layers present at the time of application and “lesions” tend to run along the leaf blade

### Initial symptoms:

- Small-medium water-soaked areas (A)
- Initially lesions have a grayish-green appearance & oval/elliptical in shape (B)

### Mature Symptoms:

- Oval to elliptical lesions, tan- or light gray-colored interiors & brownish margins (C)
- Lesions may coalesce and affect entire leaf blade with head and seed infections (C&D)





## Scald of barley: Management strategies

## Thank you to the PCDMN Phase 2 Funders

Rotation to non-host for => 2 years

Barley

Canola

Field  
peas

Resistant  
varieties

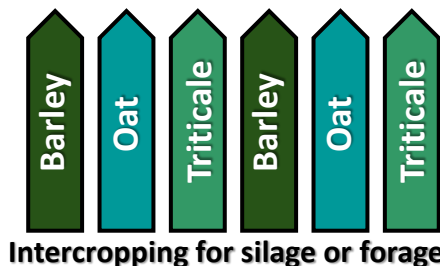
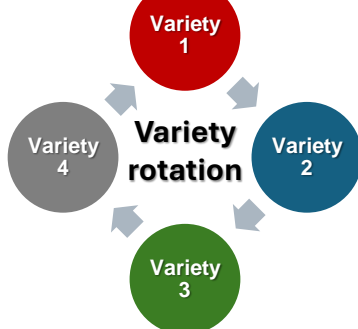
Volunteer control



Foliar fungicide

Upper canopy

(Early season symptoms: ~GS37-39  
Mid season symptoms: GS59-61  
Early + mid season symptoms:  
~GS37-39 + GS59-61)



Intercropping for silage or forage

