



## Septoria leaf and glume blotch - Wheat

### Occurrence and management:

- Found across the Prairies
  - Prevalence varies due to moisture, rotation, and variety
    - More prevalent in areas receiving frequent rainfall
    - Limited information on varietal susceptibility/resistance
- Use an integrated approach combining host resistance, rotation, fungicide, etc.

### Symptoms Occur On:

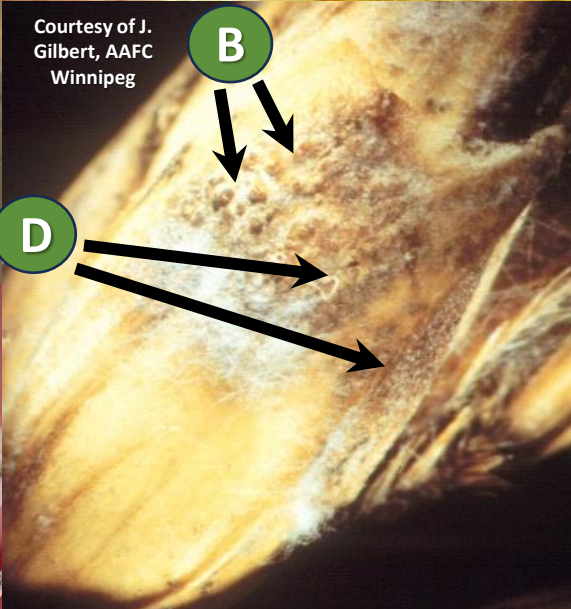
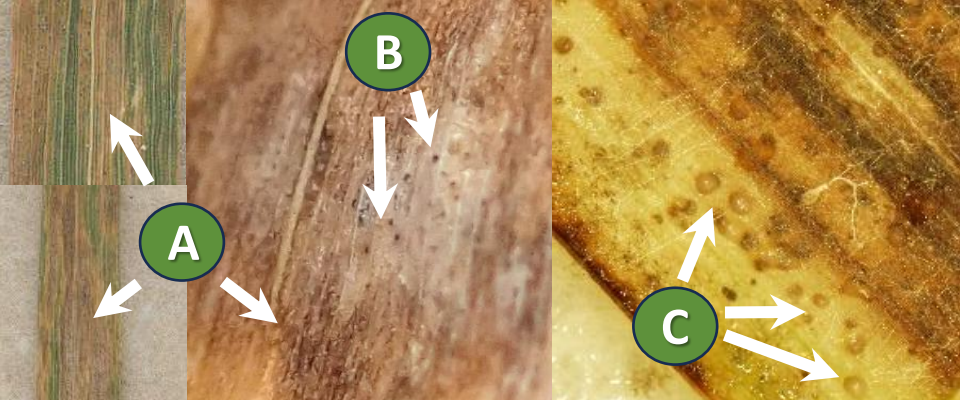
- Mainly on leaves, but can also occur on glumes and grain (A-E)
- Early signs can be confused with tan spot and physiological leaf spotting (PLS) symptoms

### Initial and mature symptoms:

- Water-soaked lesions that yellow & then become tan coloured, generally oval-shaped & may coalesce (A)
- With wetter conditions honey brown fruiting structures (pycnidia) will be visible in lesions (B), & may ooze spores during wet conditions (C)
- Yellowing around mature lesions (A)

### Glume blotch phase:

- Purplish-brown discolouration of glumes, while pycnidia may be present (B, D)
- Seed infections can be confused with fusarium damaged kernels during grading (E)



Fusarium damaged kernels (FDK, L) and glume blotch infected wheat kernels (R)



# Management Strategies

Rotation to non-host for => 2 years

Wheat

Canola

Field  
peas

Resistant  
varieties\*

\*Limited information is available on Prairie variety susceptibility/resistance levels. Consult breeders and/or seed growers



\*\*Test seed if elevated levels of glume blotch occur in source crop



Volunteer control



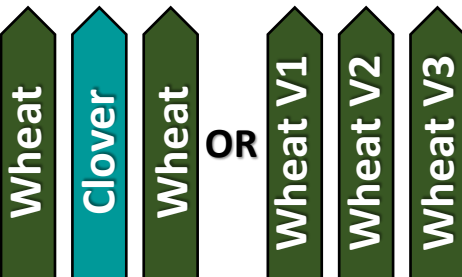
Foliar fungicide

Upper canopy

(Early season symptoms: ~GS37-39)

Mid season symptoms: GS59-61

Early + mid season symptoms:  
~GS37-39 + GS59-61)



Intercropping or wheat  
variety mixtures



**PRAIRIE CROP DISEASE  
MONITORING NETWORK**



# Thank you to the PCDMN Phase 2 Funders



Canada

