



Spot-Form Net Blotch - Barley

Occurrence and management:

- Spot-form net blotch is found across the Prairies
 - Less prevalent than net-form net blotch & spot blotch
 - Can be more prevalent with susceptible varieties that are resistant to net-form net blotch & spot blotch
- Use an integrated approach combining host resistance, rotation, fungicide, etc.

Symptoms Occur On:

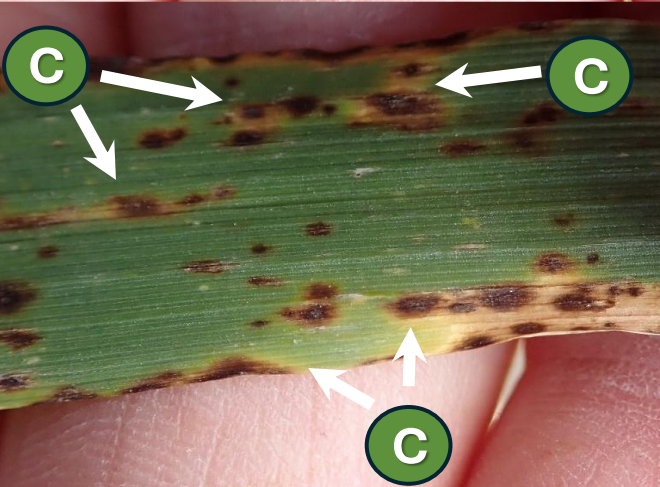
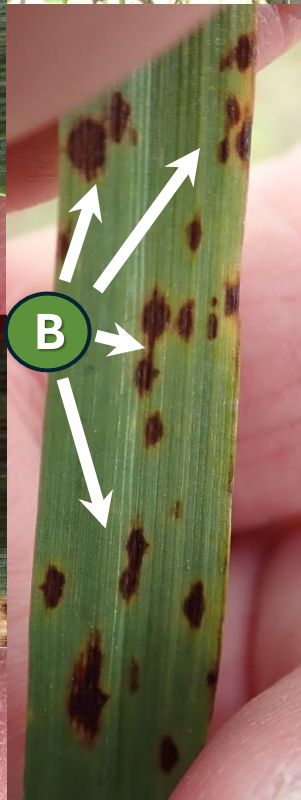
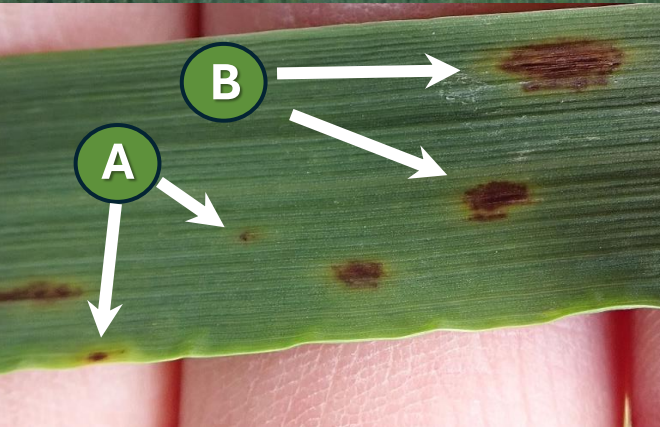
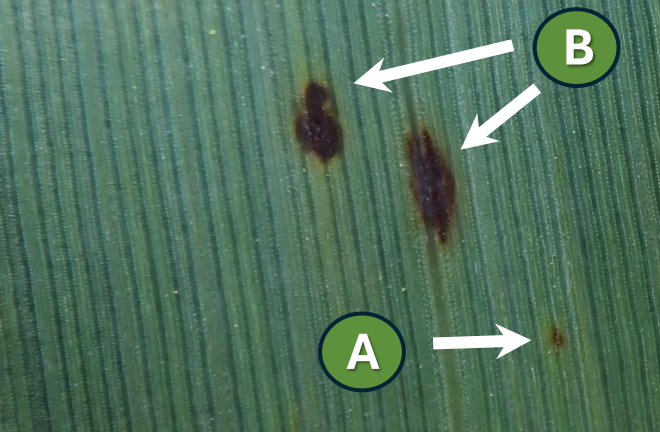
- Mainly on leaves, but can also occur on leaf sheaths and head/grain tissues (A-C)
- Early signs can be confused with physiological leaf spotting (PLS) symptoms, which are less oval

Initial symptoms:

- Small brown spots or flecks, which may have yellowing around margins (A)
- Early symptoms may be confused with net-form net blotch, spot blotch and PLS

Mature Symptoms:

- Lesions do not elongate & become narrow (A,B)
- Small-medium sized oval brownish lesions primarily on leaves, which can coalesce (A,B)
- Lack netted appearance (A,B)
- Yellowing around lesions is common with mature symptoms (C)





Management Strategies

Rotation to non-host for => 2 years

Barley

Canola

**Field
peas**

**Resistant
varieties**

Foliar fungicide

**Seed
treatment***

*more important for
net-form net blotch

Volunteer control

Upper canopy

(Early season symptoms:
~GS37-39

Mid season symptoms: GS59-61

Early + mid season symptoms:
~GS37-39 + GS59-61)



Barley

Oat

Triticale

Barley

Oat

Triticale

**Intercropping for silage
or forage**



**PRAIRIE CROP DISEASE
MONITORING NETWORK**



Thank you to the PCDMN Phase 2 Funders



Canada

