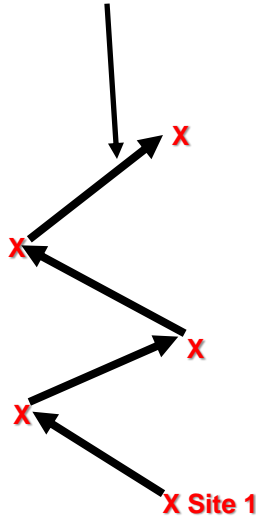


Prairie Crop Disease Monitoring Network

**Guide to scouting and
identification of the
mycosphaerella/ ascochyta
complex of field pea
August 2024**



**“W-shaped” sampling path
(total path length ~400-500 feet
in length, with 50-100 feet
between sampling points (X))**



**Headlands
of field
(avoid or
assess
separately)**



Flowering stage – Field pea crop

Symptoms of mycosphaerella/ascochyta complex



Robyne Davidson, AAF Lacombe



Symptoms of mycosphaerella/ascochyta complex



Stephanie Boechler
and Sabine Banniza,
U. of S., Crop
Development Centre,
Saskatoon

Symptoms of mycosphaerella/ascochyta complex



Stephanie Boechler and Sabine Banniza, U. of S., Crop Development Centre, Saskatoon

Symptoms of mycosphaerella/ascochyta complex (*Ascochyta pisi*)

Note distinct blackish pepper spots or bumps (pycnidia) that cover lesion surfaces. With moist conditions these pycnidia (asexual fruiting bodies) can ooze masses of pycnidiospores.



Stephanie Boechler and Sabine Banniza, U. of S., Crop Development Centre, Saskatoon

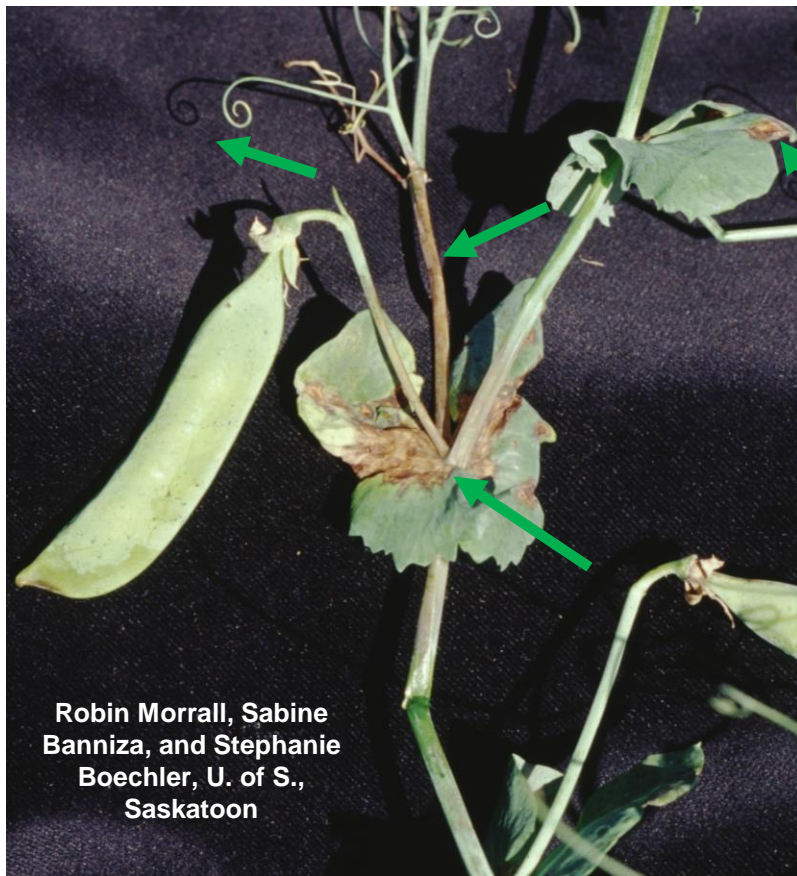
Bacterial blight of field peas



Robin Morrall, Sabine Banniza, and Stephanie Boechler, U. of S., Saskatoon

Bacterial leaf blight of field peas. Affected areas (green arrows) have a greasy water-soaked appearance with lesions being brownish in colour and angular, while oozing of bacterial may be evident. Lesions do not have the small blackish fruiting bodies (pycnidia) of the ascochyta/mycosphaerella complex. When held up to the light bacterial leaf blight lesions on leaves can be translucent.

Bacterial blight of field peas



Robin Morrall, Sabine Banniza, and Stephanie Boechler, U. of S., Saskatoon



Robin Morrall, Sabine Banniza, and Stephanie Boechler, U. of S., Saskatoon

Bacterial leaf blight of field peas. Affected areas (green arrows) have a greasy water-soaked appearance with lesions being brownish in colour and angular, while oozing of bacterial may be evident. Lesions do not have the small blackish fruiting bodies (pycnidia) of the ascochyta/mycosphaerella complex. When held up to the light bacterial leaf blight lesions on leaves can be translucent. See: <https://saskpulse.com/resources/bacterial-blight-in-peas/?download-pdf>.

Bacterial blight of field peas

Syama Chatterton,
AAFC Lethbridge



A

Syama Chatterton,
AAFC Lethbridge



B



C

Syama Chatterton,
AAFC Lethbridge



D

Syama Chatterton,
AAFC Lethbridge

Bacterial leaf blight of field peas. Affected areas (green arrows) have a greasy water-soaked appearance with lesions being brownish in colour and angular, while oozing of bacterial may be evident. (A) early symptoms and water soaking; (B) bacterial blight lesions bordered by veins; (C) general view of symptoms in the field; (D) severe bacterial blight infections of stems. See: <https://saskpulse.com/resources/bacterial-blight-in-peas/?download-pdf>.

A combination of bacterial damage and mycosphaerella/ ascochyta complex in a hail damaged field pea crop



Bacterial leaf spotting likely due to damage from hail. Some damaged tissue may have invasion by saprophytic fungi. Affected areas (green arrows) have a greasy water-soaked appearance and oozing of bacterial may be evident. Purple-blackish flecking due to the mycosphaerella/ ascochyta complex (red arrows). Note saprophytic fungi colonizing the dead field pea tissue may produce an orangish or whitish fungal growth (blue arrow).

Acknowledgements

The PCDMN graciously acknowledges the generous assistance and input of:

Mike Harding, Alberta Agriculture and Irrigation, Brooks, AB;

Robyne Davidson, Lakeland College, Lacombe, AB

**Syama Chatterton, Agriculture and Agri-Food Canada (AAFC),
Lethbridge, AB;**

**Stephanie Boechler and Sabine Banniza, U. of S., Crop
Development Centre, Saskatoon, SK; and**

Michelle Hubbard, AAFC, Swift Current, SK

Prairie Crop Disease Monitoring Network (PCDMN) Funders 2023-2028

