



Scald of Barley

Occurrence:

- Cooler moister areas of the western Prairie region
- Risk of appearance increased with susceptible varieties and tight rotations

Symptoms Occur On:

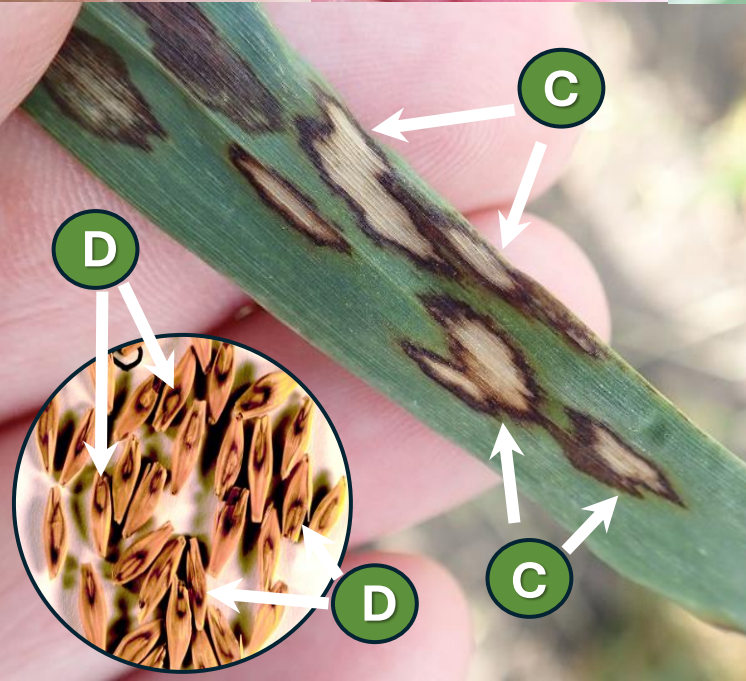
- Leaves, leaf sheaths and head tissues (A-D)
- Some herbicides can produce “scald-like” symptoms (e.g. Puma) under cooler temps.
 - Herbicide damage confined to leaf layers present at the time of application and “lesions” tend to run along the leaf blade

Initial symptoms:

- Small-medium water-soaked areas (A)
- Initially lesions have a grayish-green appearance & oval/elliptical in shape (B)

Mature Symptoms:

- Oval to elliptical lesions, tan- or light gray-colored interiors & brownish margins (C)
- Lesions may coalesce and affect entire leaf blade with head and seed infections (C&D)





Management Strategies

Rotation to non-host for => 2 years



**Resistant
varieties**

Foliar fungicide

Upper canopy

(Early season symptoms: ~GS37-39)

Mid season symptoms: GS59-61

Early + mid season symptoms:
~GS37-39 + GS59-61)

Volunteer control



Variety
1

Variety
4

**Variety
rotation**

Variety
2

Variety
3

Barley

Oat

Triticale

Barley

Oat

Triticale

Intercropping for silage or forage



**PRAIRIE CROP DISEASE
MONITORING NETWORK**



Thank you to the PCDMN Phase 2 Funders

