



# Net-Form/Net Blotch - Barley

## **Occurrence:**

- Net-form net blotch can be found across the Prairies and is generally more common than spot-form net blotch

## **Symptoms Occur On:**

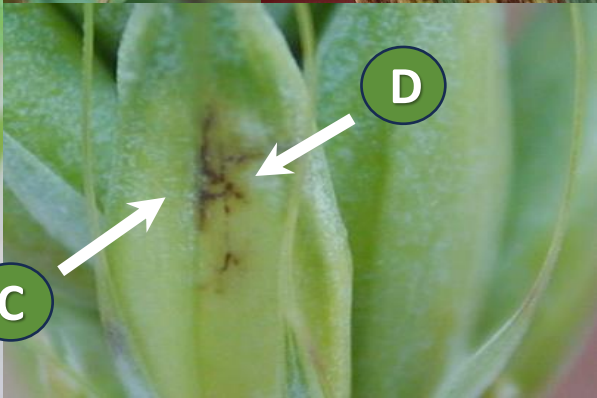
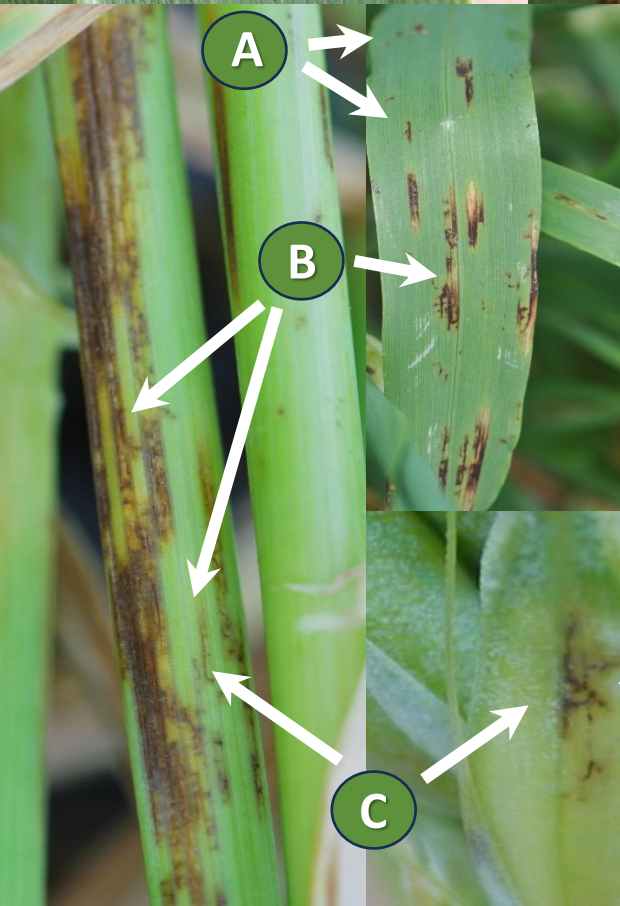
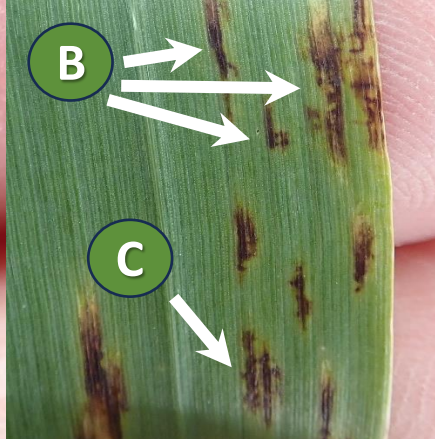
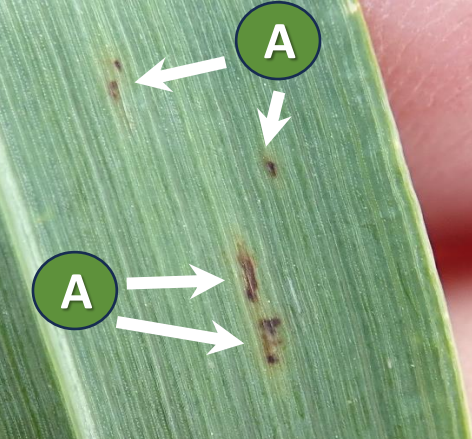
- Leaves, stems, and head/grain tissues (A-D)

## **Initial symptoms:**

- Small spots, typically narrow/rectangular (A)
- Can be confused with spot-form net blotch and spot blotch (A)

## **Mature Symptoms:**

- Small spots eventually expand into longer narrow lesions on leaves and stems (B)
- Interconnections between individual lesions produce a netted appearance, while yellowing can occur around mature lesion margins (C)
- Lesions can occur on kernels (D)
- In comparison, lesions of spot-form net & spot blotch remain oval/elliptical in shape and may have yellowing around margins





# Management Strategies

Rotation to non-host for => 2 years

**Barley**

**Canola**

**Field  
peas**

**Resistant  
varieties**

**Seed  
treatment**

**Foliar fungicide**

**Volunteer control**

**Upper canopy**

(Early season symptoms: ~GS37-39)

Mid season symptoms: GS59-61

Early + mid season symptoms:

~GS37-39 + GS59-61)

**Barley**

**Oat**

**Triticale**

**Barley**

**Oat**

**Triticale**

**Intercropping for silage  
or forage**



**PRAIRIE CROP DISEASE  
MONITORING NETWORK**



# Thank you to the PCDMN Phase 2 Funders

